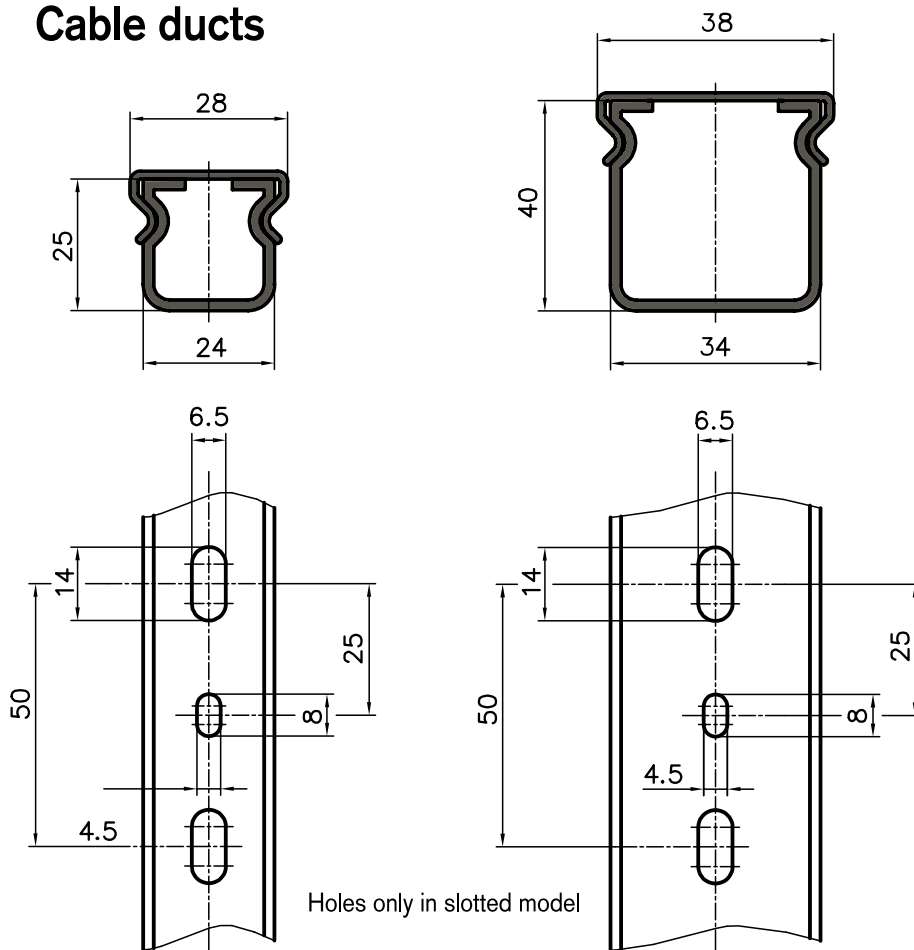


## Cable ducts



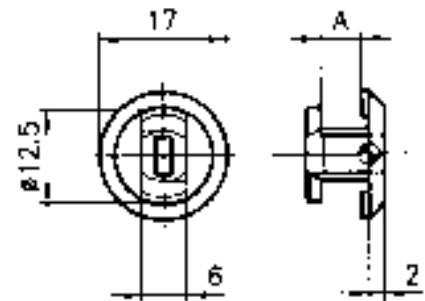
### Application

The cable ducts are placed directly onto the extrusions and are secured using either the retaining clips or extrusion nuts available. The duct is easy to open or close any time as it is fitted with a press-on cover. The slotted sides enable cables to be fed in and out at any point.

### Specification

UPVC, light grey  
(standard length: cable ducts 2000 mm)

## Retaining clips



### Application

The quarter turn retaining clips allow the easy fixing of either cable ducts or thin sheet material onto the extrusions Base 50, 45, 40 and 30.

### Specification

PA-GF, black



Order data		Order number	
<b>Cable ducts</b>		<b>closed</b>	<b>slotted</b>
40 mm wide	Standard length	C38-00-2M	C38-01-2M
	auf Länge geschnitten	C38-00-02/...	C38-01-02/...
25 mm wide	Standard length	B38-00-2M	B38-01-2M
	auf Länge geschnitten	B38-00-02/...	B38-01-02/...

Other dimension on demand.

Order data	Order number
Retaining clips A = 5.5	AC38-20
Retaining clips A = 3.5	B38-20